

Scaled data based on original data using

LM-41-14 Approved Method for Photometric Testing Of Indoor Fluorescent Luminaires

Test Report Prepared for

Cooper Lighting Solutions

(formerly Eaton)

Brand: CORELITE

Report Number: 19097

Luminaire Tested: **AW-WB-2T8-ALL**

Issue Date: 3/3/2020

Test Information

Test Method: LM-41-14
Report Number: 19097
Test Lab:
Issue Date: 3/3/2020
Manufacturer: COOPER LIGHTING SOLUTIONS (FORMERLY EATON)
Product Line: CORELITE
Catalog Number: AW-WB-2T8-ALL
Description: CLASS A DIRECT/INDIRECT WALL LUMINAIRE WITH WHITE INTERIOR AND WHITE
18 CELL PERF BAFFLE WITH WHITE LAMP ISOLATOR
Light Source: TWO PHILIPS 32 WATT T8 LAMP

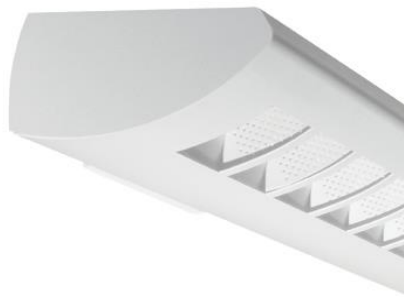
F32T8/TL841. LUMEN RATING = 2950 LMS.

Ballast/Driver: -

Summary

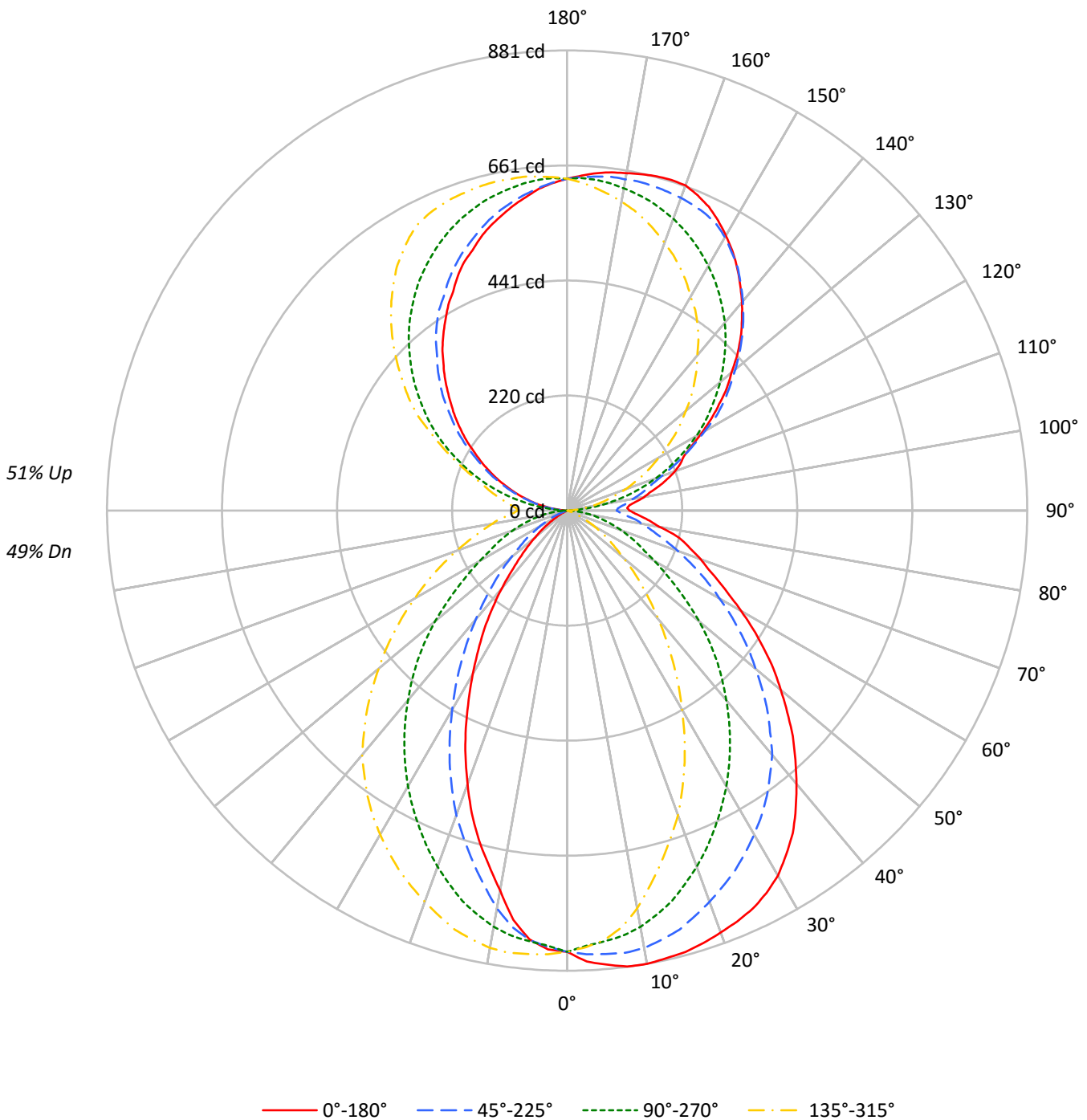
Lumens per Lamp: 2950 (2 lamps)
Luminaire Lumens: 3551.6 lumens
Efficiency: 60.2%
Efficacy: 53.8 lumens/watt
Spacing Criteria (0/90/45): 1.06 / 1.09 / 1.15
Luminous Opening: Rectangular w/ Sides (W: 0.19' x L: 3' x H: 0.09')
CIE Type: General Diffuse

Input Watts (W): 66
Input Voltage (V): NR
Input Current (A_{in}): NR
Voltage Rise (V): NR
Power Factor: NR
Total Harmonic Distortion (THDi): NR
Frequency (hertz): 60
Stabilization Time: NR
Operation Time: NR
Ambient Temperature (°C): NR
Test Distance: 25 FT



TEST NUMBER: 19097
CATALOG NUMBER: AW-WB-2T8-ALL

Luminous Intensity Polar Plot





TEST NUMBER: 19097

CATALOG NUMBER: AW-WB-2T8-ALL

COEFFICIENT OF UTILIZATION - ZONAL CAVITY METHOD:

| | | | | | | | | | | | | | | | | | | | | | | | | | | | | | | | | | | | | | | |
|-----|----|----|----|----|----|----|----|----|----|----|----|----|----|----|----|----|----|----|----|----|----|----|----|----|--|--|--|----|--|--|--|--|--|--|--|--|----|---|
| RF | 20 | | | | | | | | | 20 | | | | | | | | | 20 | | | | | | | | | 20 | | | | | | | | | | |
| RC | 80 | | | | | | | | | 70 | | | | | | | | | 50 | | | | | | | | | 30 | | | | | | | | | 10 | 0 |
| RW | 70 | 50 | 30 | 10 | 70 | 50 | 30 | 10 | 50 | 30 | 10 | 50 | 30 | 10 | 50 | 30 | 10 | 50 | 30 | 10 | 50 | 30 | 10 | 0 | | | | | | | | | | | | | | |
| RCR | | | | | | | | | | | | | | | | | | | | | | | | | | | | | | | | | | | | | | |
| 0 | 64 | 64 | 64 | 64 | 59 | 59 | 59 | 59 | 50 | 50 | 50 | 41 | 41 | 41 | 33 | 33 | 33 | 30 | | | | | | 30 | | | | | | | | | | | | | | |
| 1 | 59 | 56 | 54 | 52 | 54 | 52 | 50 | 48 | 44 | 42 | 41 | 36 | 35 | 34 | 29 | 29 | 28 | 25 | | | | | | 25 | | | | | | | | | | | | | | |
| 2 | 54 | 49 | 46 | 42 | 49 | 45 | 42 | 40 | 38 | 36 | 34 | 32 | 30 | 29 | 26 | 25 | 24 | 21 | | | | | | 21 | | | | | | | | | | | | | | |
| 3 | 49 | 43 | 39 | 36 | 45 | 40 | 36 | 33 | 34 | 31 | 29 | 29 | 26 | 25 | 23 | 22 | 21 | 18 | | | | | | 18 | | | | | | | | | | | | | | |
| 4 | 45 | 39 | 34 | 30 | 41 | 36 | 32 | 29 | 31 | 27 | 25 | 26 | 23 | 21 | 21 | 19 | 18 | 16 | | | | | | 16 | | | | | | | | | | | | | | |
| 5 | 41 | 35 | 30 | 26 | 38 | 32 | 28 | 25 | 27 | 24 | 22 | 23 | 21 | 19 | 19 | 17 | 16 | 14 | | | | | | 14 | | | | | | | | | | | | | | |
| 6 | 38 | 31 | 26 | 23 | 35 | 29 | 25 | 22 | 25 | 22 | 19 | 21 | 19 | 17 | 17 | 16 | 14 | 12 | | | | | | 12 | | | | | | | | | | | | | | |
| 7 | 35 | 28 | 23 | 20 | 33 | 26 | 22 | 19 | 23 | 19 | 17 | 19 | 17 | 15 | 16 | 14 | 13 | 11 | | | | | | 11 | | | | | | | | | | | | | | |
| 8 | 33 | 26 | 21 | 18 | 30 | 24 | 20 | 17 | 21 | 17 | 15 | 18 | 15 | 13 | 15 | 13 | 11 | 10 | | | | | | 10 | | | | | | | | | | | | | | |
| 9 | 31 | 23 | 19 | 16 | 28 | 22 | 18 | 15 | 19 | 16 | 14 | 16 | 14 | 12 | 14 | 12 | 10 | 9 | | | | | | 9 | | | | | | | | | | | | | | |
| 10 | 29 | 22 | 17 | 14 | 27 | 20 | 16 | 14 | 18 | 14 | 12 | 15 | 13 | 11 | 13 | 11 | 10 | 8 | | | | | | 8 | | | | | | | | | | | | | | |

AVERAGE LUMINANCE (cd/sqm):

| | 0° | 90° | 180° | 270° |
|-----|-------|-------|-------|-------|
| 0° | 15951 | 15951 | 15951 | 15951 |
| 5° | 16500 | 15068 | 15579 | 15068 |
| 10° | 16808 | 14319 | 14090 | 14319 |
| 15° | 16966 | 13431 | 12666 | 13431 |
| 20° | 17090 | 12436 | 11083 | 12436 |
| 25° | 17282 | 11426 | 9428 | 11426 |
| 30° | 17300 | 10436 | 7740 | 10436 |
| 35° | 17015 | 9407 | 6245 | 9407 |
| 40° | 16426 | 8367 | 4689 | 8367 |
| 45° | 15837 | 7327 | 3303 | 7327 |
| 50° | 15144 | 6199 | 2252 | 6199 |
| 55° | 14485 | 5008 | 1383 | 5008 |
| 60° | 13812 | 4006 | 560 | 4006 |
| 65° | 13430 | 3281 | 21 | 3281 |
| 70° | 13869 | 2641 | 26 | 2641 |
| 75° | 15203 | 1996 | 33 | 1996 |
| 80° | 16626 | 1401 | 46 | 1401 |
| 85° | 23443 | 622 | 81 | 622 |



TEST NUMBER: 19097

CATALOG NUMBER: AW-WB-2T8-ALL

ZONAL LUMENS:

| Zone | Lumens | % Fixture | % Lamp |
|-----------|--------|-----------|--------|
| 0°-10° | 79.0 | 2.2 | 1.3 |
| 10°-20° | 213.9 | 6.0 | 3.6 |
| 20°-30° | 296.6 | 8.4 | 5.0 |
| 30°-40° | 320.1 | 9.0 | 5.4 |
| 40°-50° | 289.3 | 8.1 | 4.9 |
| 50°-60° | 226.2 | 6.4 | 3.8 |
| 60°-70° | 156.7 | 4.4 | 2.7 |
| 70°-80° | 103.8 | 2.9 | 1.8 |
| 80°-90° | 64.9 | 1.8 | 1.1 |
| 90°-100° | 61.5 | 1.7 | 1.0 |
| 100°-110° | 128.7 | 3.6 | 2.2 |
| 110°-120° | 207.9 | 5.9 | 3.5 |
| 120°-130° | 279.4 | 7.9 | 4.7 |
| 130°-140° | 317.4 | 8.9 | 5.4 |
| 140°-150° | 312.3 | 8.8 | 5.3 |
| 150°-160° | 261.7 | 7.4 | 4.4 |
| 160°-170° | 172.3 | 4.9 | 2.9 |
| 170°-180° | 60.0 | 1.7 | 1.0 |
| 0°-30° | 589.5 | 16.6 | 10.0 |
| 0°-40° | 909.6 | 25.6 | 15.4 |
| 0°-60° | 1425.1 | 40.1 | 24.2 |
| 0°-90° | 1750.4 | 49.3 | 29.7 |
| 90°-120° | 398.1 | 11.2 | 6.7 |
| 90°-150° | 1307.2 | 36.8 | 22.2 |
| 90°-180° | 1801.0 | 50.7 | 30.5 |
| 0°-180° | 3551.6 | 100.0 | 60.2 |

CANDELA DISTRIBUTION:

| | 0° | 90° | 180° | 270° | 360° | Flux |
|------|-----|-----|------|------|------|------|
| 0° | 845 | 845 | 845 | 845 | 845 | |
| 5° | 873 | 828 | 824 | 828 | 873 | 84 |
| 15° | 875 | 774 | 653 | 774 | 875 | 247 |
| 25° | 841 | 670 | 459 | 670 | 841 | 387 |
| 35° | 754 | 543 | 277 | 543 | 754 | 469 |
| 45° | 611 | 404 | 127 | 404 | 611 | 470 |
| 55° | 459 | 255 | 44 | 255 | 459 | 411 |
| 65° | 320 | 148 | 0 | 148 | 320 | 320 |
| 75° | 232 | 76 | 0 | 76 | 232 | 242 |
| 85° | 145 | 18 | 0 | 18 | 145 | 126 |
| 90° | 119 | 0 | 0 | 0 | 119 | 66 |
| 95° | 120 | 24 | 12 | 24 | 120 | 105 |
| 105° | 183 | 127 | 75 | 127 | 183 | 193 |
| 115° | 247 | 232 | 152 | 232 | 247 | 250 |
| 125° | 356 | 334 | 236 | 334 | 356 | 318 |
| 135° | 470 | 427 | 324 | 427 | 470 | 362 |
| 145° | 568 | 507 | 413 | 507 | 568 | 355 |
| 155° | 642 | 570 | 495 | 570 | 642 | 295 |
| 165° | 663 | 614 | 565 | 614 | 663 | 188 |
| 175° | 648 | 635 | 618 | 635 | 648 | 62 |
| 180° | 635 | 635 | 635 | 635 | 635 | |



TEST NUMBER: 19097

CATALOG NUMBER: AW-WB-2T8-ALL

CANDELA DISTRIBUTION (FULL):

| | 0° | 22.5° | 45° | 67.5° | 90° | 112.5° | 135° | 157.5° | 180° | 202.5° | 225° |
|--------|-------|-------|-------|-------|-------|--------|-------|--------|-------|--------|-------|
| 0° | 844.7 | 844.7 | 844.7 | 844.7 | 844.7 | 844.7 | 844.7 | 844.7 | 844.7 | 844.7 | 844.7 |
| 2.5° | 864.3 | 854.0 | 850.2 | 848.4 | 833.9 | 833.5 | 836.3 | 832.5 | 841.0 | 832.5 | 836.3 |
| 5° | 872.7 | 864.3 | 852.2 | 849.4 | 827.8 | 817.4 | 825.1 | 808.2 | 824.0 | 808.2 | 825.1 |
| 7.5° | 880.4 | 871.0 | 854.0 | 851.2 | 820.8 | 797.6 | 804.3 | 773.3 | 790.2 | 773.3 | 804.3 |
| 10° | 881.2 | 872.0 | 850.2 | 848.4 | 809.1 | 767.7 | 773.3 | 725.4 | 738.7 | 725.4 | 773.3 |
| 12.5° | 877.6 | 869.2 | 841.0 | 842.8 | 792.5 | 730.2 | 734.8 | 685.9 | 694.3 | 685.9 | 734.8 |
| 15° | 874.8 | 863.5 | 830.7 | 827.9 | 774.2 | 686.9 | 696.4 | 641.0 | 653.1 | 641.0 | 696.4 |
| 17.5° | 868.1 | 855.8 | 813.8 | 814.6 | 749.8 | 651.3 | 658.0 | 602.3 | 607.2 | 602.3 | 658.0 |
| 20° | 859.7 | 845.6 | 796.9 | 795.9 | 725.5 | 610.0 | 620.3 | 554.7 | 557.5 | 554.7 | 620.3 |
| 22.5° | 851.2 | 832.5 | 778.9 | 777.1 | 698.7 | 568.8 | 576.2 | 504.7 | 508.5 | 504.7 | 576.2 |
| 25° | 841.0 | 819.4 | 760.2 | 756.4 | 669.5 | 523.6 | 532.1 | 456.0 | 458.8 | 456.0 | 532.1 |
| 27.5° | 825.8 | 804.3 | 738.7 | 734.8 | 640.0 | 471.9 | 486.0 | 400.6 | 408.0 | 400.6 | 486.0 |
| 30° | 807.1 | 784.6 | 716.1 | 712.3 | 609.5 | 435.2 | 440.1 | 362.2 | 361.1 | 362.2 | 440.1 |
| 32.5° | 780.7 | 763.8 | 692.6 | 687.9 | 577.1 | 389.3 | 396.8 | 315.3 | 316.0 | 315.3 | 396.8 |
| 35° | 753.6 | 740.5 | 666.4 | 667.2 | 543.4 | 348.1 | 352.7 | 274.8 | 276.6 | 274.8 | 352.7 |
| 37.5° | 719.0 | 706.7 | 638.2 | 637.2 | 509.5 | 304.0 | 311.4 | 232.5 | 233.5 | 232.5 | 311.4 |
| 40° | 683.1 | 676.7 | 610.8 | 611.8 | 474.3 | 267.3 | 271.9 | 197.9 | 195.0 | 197.9 | 271.9 |
| 42.5° | 646.7 | 637.2 | 575.2 | 580.0 | 439.2 | 233.5 | 235.3 | 162.0 | 157.4 | 162.0 | 235.3 |
| 45° | 610.8 | 600.5 | 542.4 | 548.0 | 404.3 | 199.7 | 201.5 | 134.0 | 127.4 | 134.0 | 201.5 |
| 47.5° | 571.6 | 563.9 | 506.7 | 515.2 | 367.3 | 168.6 | 171.5 | 106.6 | 103.0 | 106.6 | 171.5 |
| 50° | 533.9 | 526.5 | 471.1 | 479.6 | 330.1 | 137.6 | 140.4 | 82.3 | 79.4 | 82.3 | 140.4 |
| 52.5° | 498.3 | 490.8 | 438.0 | 444.7 | 291.7 | 117.1 | 115.1 | 65.3 | 62.5 | 65.3 | 115.1 |
| 55° | 458.8 | 454.9 | 403.4 | 411.9 | 255.0 | 95.3 | 97.4 | 47.7 | 43.8 | 47.7 | 97.4 |
| 57.5° | 422.1 | 423.2 | 370.6 | 377.0 | 222.2 | 74.8 | 76.6 | 33.6 | 29.7 | 33.6 | 76.6 |
| 60° | 384.7 | 383.7 | 336.8 | 345.2 | 193.1 | 60.7 | 60.7 | 17.4 | 15.6 | 17.4 | 60.7 |
| 62.5° | 349.9 | 354.5 | 307.6 | 318.1 | 166.8 | 44.8 | 43.8 | 8.2 | 3.3 | 8.2 | 43.8 |
| 65° | 319.9 | 318.1 | 278.6 | 284.2 | 148.0 | 29.7 | 31.5 | 1.5 | 0.5 | 1.5 | 31.5 |
| 67.5° | 292.7 | 287.1 | 250.4 | 256.0 | 128.3 | 18.4 | 18.4 | 0.5 | 0.5 | 0.5 | 18.4 |
| 70° | 271.9 | 262.5 | 225.0 | 229.6 | 110.1 | 7.2 | 9.0 | 0.5 | 0.5 | 0.5 | 9.0 |
| 72.5° | 249.4 | 243.0 | 201.5 | 205.3 | 92.1 | 0.5 | 0.5 | 0.5 | 0.5 | 0.5 | 0.5 |
| 75° | 231.7 | 224.0 | 179.9 | 182.7 | 75.7 | 0.5 | 0.5 | 0.5 | 0.5 | 0.5 | 0.5 |
| 77.5° | 209.1 | 205.3 | 162.0 | 163.0 | 59.8 | 0.5 | 0.5 | 0.5 | 0.5 | 0.5 | 0.5 |
| 80° | 178.9 | 188.4 | 145.3 | 148.1 | 47.5 | 0.5 | 0.5 | 0.5 | 0.5 | 0.5 | 0.5 |
| 82.5° | 162.0 | 163.0 | 132.0 | 131.2 | 32.5 | 0.5 | 0.5 | 0.5 | 0.5 | 0.5 | 0.5 |
| 85° | 145.3 | 148.1 | 114.3 | 117.1 | 18.4 | 0.5 | 0.5 | 0.5 | 0.5 | 0.5 | 0.5 |
| 87.5° | 130.2 | 132.0 | 102.0 | 102.0 | 5.2 | 0.5 | 0.5 | 0.5 | 0.5 | 0.5 | 0.5 |
| 90° | 119.4 | 116.1 | 94.8 | 70.5 | 0.5 | 0.5 | 0.5 | 0.5 | 0.5 | 0.5 | 0.5 |
| 92.5° | 115.1 | 115.1 | 97.4 | 58.9 | 4.9 | 0.5 | 2.6 | 0.5 | 1.5 | 0.5 | 2.6 |
| 95° | 119.9 | 123.5 | 105.8 | 66.4 | 23.6 | 10.0 | 14.6 | 7.2 | 11.8 | 7.2 | 14.6 |
| 97.5° | 134.0 | 138.7 | 117.1 | 78.4 | 48.9 | 23.1 | 29.7 | 19.5 | 25.1 | 19.5 | 29.7 |
| 100° | 149.9 | 162.0 | 127.4 | 107.6 | 74.8 | 40.0 | 45.6 | 35.4 | 41.0 | 35.4 | 45.6 |
| 102.5° | 163.0 | 171.5 | 142.5 | 119.9 | 100.6 | 46.6 | 61.8 | 42.8 | 58.9 | 42.8 | 61.8 |
| 105° | 182.7 | 186.6 | 156.6 | 147.1 | 127.4 | 74.8 | 78.4 | 70.2 | 74.8 | 70.2 | 78.4 |
| 107.5° | 200.7 | 203.5 | 171.5 | 178.9 | 154.7 | 96.4 | 97.4 | 86.9 | 93.5 | 86.9 | 97.4 |
| 110° | 219.4 | 218.4 | 192.2 | 209.9 | 180.4 | 118.9 | 118.9 | 105.8 | 112.3 | 105.8 | 118.9 |



TEST NUMBER: 19097

CATALOG NUMBER: AW-WB-2T8-ALL

CANDELA DISTRIBUTION (continued):

| | 0° | 22.5° | 45° | 67.5° | 90° | 112.5° | 135° | 157.5° | 180° | 202.5° | 225° |
|--------|-------|-------|-------|-------|-------|--------|-------|--------|-------|--------|-------|
| 112.5° | 234.5 | 232.5 | 217.6 | 239.1 | 206.7 | 142.5 | 137.6 | 123.5 | 132.0 | 123.5 | 137.6 |
| 115° | 246.6 | 256.8 | 245.5 | 270.1 | 232.5 | 165.8 | 160.2 | 144.3 | 151.7 | 144.3 | 160.2 |
| 117.5° | 269.1 | 283.2 | 273.7 | 295.5 | 259.3 | 191.2 | 180.9 | 165.8 | 171.5 | 165.8 | 180.9 |
| 120° | 297.3 | 312.4 | 304.0 | 328.3 | 285.5 | 216.6 | 202.5 | 186.6 | 192.2 | 186.6 | 202.5 |
| 122.5° | 327.3 | 355.5 | 339.6 | 369.6 | 311.4 | 240.9 | 226.8 | 209.1 | 212.7 | 209.1 | 226.8 |
| 125° | 355.5 | 368.6 | 367.8 | 383.7 | 334.4 | 254.0 | 251.2 | 218.4 | 236.3 | 218.4 | 251.2 |
| 127.5° | 385.5 | 399.6 | 393.2 | 413.7 | 357.9 | 292.7 | 273.7 | 254.0 | 257.8 | 254.0 | 273.7 |
| 130° | 410.9 | 429.6 | 420.3 | 436.2 | 382.3 | 318.1 | 296.3 | 273.7 | 280.4 | 273.7 | 296.3 |
| 132.5° | 441.9 | 457.0 | 447.5 | 460.6 | 404.5 | 341.4 | 321.7 | 298.3 | 301.2 | 298.3 | 321.7 |
| 135° | 470.1 | 482.4 | 473.9 | 482.4 | 426.8 | 366.8 | 344.2 | 321.7 | 323.7 | 321.7 | 344.2 |
| 137.5° | 495.4 | 507.5 | 499.3 | 507.5 | 448.9 | 388.3 | 366.8 | 342.4 | 347.0 | 342.4 | 366.8 |
| 140° | 520.8 | 531.1 | 523.6 | 521.6 | 469.6 | 411.9 | 387.5 | 365.0 | 368.6 | 365.0 | 387.5 |
| 142.5° | 544.1 | 554.7 | 546.2 | 541.3 | 488.4 | 434.4 | 412.9 | 387.5 | 392.2 | 387.5 | 412.9 |
| 145° | 567.7 | 586.4 | 568.8 | 563.9 | 507.1 | 456.0 | 435.2 | 410.1 | 412.9 | 410.1 | 435.2 |
| 147.5° | 589.3 | 597.7 | 586.4 | 568.8 | 524.9 | 465.5 | 456.0 | 420.3 | 433.4 | 420.3 | 456.0 |
| 150° | 608.0 | 616.4 | 604.4 | 580.8 | 540.6 | 496.5 | 472.9 | 451.4 | 454.9 | 451.4 | 472.9 |
| 152.5° | 625.9 | 631.6 | 618.5 | 591.1 | 555.9 | 515.2 | 493.7 | 471.9 | 472.9 | 471.9 | 493.7 |
| 155° | 641.8 | 642.8 | 626.9 | 602.3 | 570.0 | 531.1 | 512.4 | 492.6 | 495.4 | 492.6 | 512.4 |
| 157.5° | 653.1 | 654.1 | 632.6 | 611.8 | 582.9 | 548.0 | 530.1 | 511.3 | 515.2 | 511.3 | 530.1 |
| 160° | 662.6 | 655.9 | 637.2 | 620.3 | 594.4 | 563.1 | 545.2 | 527.2 | 530.1 | 527.2 | 545.2 |
| 162.5° | 663.6 | 655.9 | 640.0 | 626.9 | 603.9 | 578.0 | 561.1 | 545.2 | 549.0 | 545.2 | 561.1 |
| 165° | 662.6 | 655.1 | 642.8 | 631.6 | 613.6 | 589.3 | 576.2 | 560.3 | 564.9 | 560.3 | 576.2 |
| 167.5° | 659.7 | 652.3 | 644.6 | 637.2 | 620.3 | 600.5 | 589.3 | 575.2 | 579.0 | 575.2 | 589.3 |
| 170° | 655.9 | 651.3 | 643.9 | 639.0 | 626.4 | 606.2 | 600.5 | 583.6 | 593.1 | 583.6 | 600.5 |
| 172.5° | 653.1 | 647.4 | 644.6 | 640.0 | 632.1 | 620.3 | 610.8 | 601.6 | 605.2 | 601.6 | 610.8 |
| 175° | 648.5 | 643.9 | 641.8 | 640.0 | 635.4 | 625.9 | 620.3 | 614.6 | 618.5 | 614.6 | 620.3 |
| 177.5° | 641.8 | 638.2 | 639.0 | 639.0 | 637.2 | 631.6 | 628.7 | 624.1 | 627.7 | 624.1 | 628.7 |
| 180° | 635.3 | 635.3 | 635.3 | 635.3 | 635.3 | 635.3 | 635.3 | 635.3 | 635.3 | 635.3 | 635.3 |



TEST NUMBER: 19097

CATALOG NUMBER: AW-WB-2T8-ALL

CANDELA DISTRIBUTION (continued):

| | 247.5° | 270° | 292.5° | 315° | 337.5° | 360° |
|--------|--------|-------|--------|-------|--------|-------|
| 0° | 844.7 | 844.7 | 844.7 | 844.7 | 844.7 | 844.7 |
| 2.5° | 833.5 | 833.9 | 848.4 | 850.2 | 854.0 | 864.3 |
| 5° | 817.4 | 827.8 | 849.4 | 852.2 | 864.3 | 872.7 |
| 7.5° | 797.6 | 820.8 | 851.2 | 854.0 | 871.0 | 880.4 |
| 10° | 767.7 | 809.1 | 848.4 | 850.2 | 872.0 | 881.2 |
| 12.5° | 730.2 | 792.5 | 842.8 | 841.0 | 869.2 | 877.6 |
| 15° | 686.9 | 774.2 | 827.9 | 830.7 | 863.5 | 874.8 |
| 17.5° | 651.3 | 749.8 | 814.6 | 813.8 | 855.8 | 868.1 |
| 20° | 610.0 | 725.5 | 795.9 | 796.9 | 845.6 | 859.7 |
| 22.5° | 568.8 | 698.7 | 777.1 | 778.9 | 832.5 | 851.2 |
| 25° | 523.6 | 669.5 | 756.4 | 760.2 | 819.4 | 841.0 |
| 27.5° | 471.9 | 640.0 | 734.8 | 738.7 | 804.3 | 825.8 |
| 30° | 435.2 | 609.5 | 712.3 | 716.1 | 784.6 | 807.1 |
| 32.5° | 389.3 | 577.1 | 687.9 | 692.6 | 763.8 | 780.7 |
| 35° | 348.1 | 543.4 | 667.2 | 666.4 | 740.5 | 753.6 |
| 37.5° | 304.0 | 509.5 | 637.2 | 638.2 | 706.7 | 719.0 |
| 40° | 267.3 | 474.3 | 611.8 | 610.8 | 676.7 | 683.1 |
| 42.5° | 233.5 | 439.2 | 580.0 | 575.2 | 637.2 | 646.7 |
| 45° | 199.7 | 404.3 | 548.0 | 542.4 | 600.5 | 610.8 |
| 47.5° | 168.6 | 367.3 | 515.2 | 506.7 | 563.9 | 571.6 |
| 50° | 137.6 | 330.1 | 479.6 | 471.1 | 526.5 | 533.9 |
| 52.5° | 117.1 | 291.7 | 444.7 | 438.0 | 490.8 | 498.3 |
| 55° | 95.3 | 255.0 | 411.9 | 403.4 | 454.9 | 458.8 |
| 57.5° | 74.8 | 222.2 | 377.0 | 370.6 | 423.2 | 422.1 |
| 60° | 60.7 | 193.1 | 345.2 | 336.8 | 383.7 | 384.7 |
| 62.5° | 44.8 | 166.8 | 318.1 | 307.6 | 354.5 | 349.9 |
| 65° | 29.7 | 148.0 | 284.2 | 278.6 | 318.1 | 319.9 |
| 67.5° | 18.4 | 128.3 | 256.0 | 250.4 | 287.1 | 292.7 |
| 70° | 7.2 | 110.1 | 229.6 | 225.0 | 262.5 | 271.9 |
| 72.5° | 0.5 | 92.1 | 205.3 | 201.5 | 243.0 | 249.4 |
| 75° | 0.5 | 75.7 | 182.7 | 179.9 | 224.0 | 231.7 |
| 77.5° | 0.5 | 59.8 | 163.0 | 162.0 | 205.3 | 209.1 |
| 80° | 0.5 | 47.5 | 148.1 | 145.3 | 188.4 | 178.9 |
| 82.5° | 0.5 | 32.5 | 131.2 | 132.0 | 163.0 | 162.0 |
| 85° | 0.5 | 18.4 | 117.1 | 114.3 | 148.1 | 145.3 |
| 87.5° | 0.5 | 5.2 | 102.0 | 102.0 | 132.0 | 130.2 |
| 90° | 0.5 | 0.5 | 70.5 | 94.8 | 116.1 | 119.4 |
| 92.5° | 0.5 | 4.9 | 58.9 | 97.4 | 115.1 | 115.1 |
| 95° | 10.0 | 23.6 | 66.4 | 105.8 | 123.5 | 119.9 |
| 97.5° | 23.1 | 48.9 | 78.4 | 117.1 | 138.7 | 134.0 |
| 100° | 40.0 | 74.8 | 107.6 | 127.4 | 162.0 | 149.9 |
| 102.5° | 46.6 | 100.6 | 119.9 | 142.5 | 171.5 | 163.0 |
| 105° | 74.8 | 127.4 | 147.1 | 156.6 | 186.6 | 182.7 |
| 107.5° | 96.4 | 154.7 | 178.9 | 171.5 | 203.5 | 200.7 |
| 110° | 118.9 | 180.4 | 209.9 | 192.2 | 218.4 | 219.4 |



TEST NUMBER: 19097

CATALOG NUMBER: AW-WB-2T8-ALL

CANDELA DISTRIBUTION (continued):

| | 247.5° | 270° | 292.5° | 315° | 337.5° | 360° |
|--------|--------|-------|--------|-------|--------|-------|
| 112.5° | 142.5 | 206.7 | 239.1 | 217.6 | 232.5 | 234.5 |
| 115° | 165.8 | 232.5 | 270.1 | 245.5 | 256.8 | 246.6 |
| 117.5° | 191.2 | 259.3 | 295.5 | 273.7 | 283.2 | 269.1 |
| 120° | 216.6 | 285.5 | 328.3 | 304.0 | 312.4 | 297.3 |
| 122.5° | 240.9 | 311.4 | 369.6 | 339.6 | 355.5 | 327.3 |
| 125° | 254.0 | 334.4 | 383.7 | 367.8 | 368.6 | 355.5 |
| 127.5° | 292.7 | 357.9 | 413.7 | 393.2 | 399.6 | 385.5 |
| 130° | 318.1 | 382.3 | 436.2 | 420.3 | 429.6 | 410.9 |
| 132.5° | 341.4 | 404.5 | 460.6 | 447.5 | 457.0 | 441.9 |
| 135° | 366.8 | 426.8 | 482.4 | 473.9 | 482.4 | 470.1 |
| 137.5° | 388.3 | 448.9 | 507.5 | 499.3 | 507.5 | 495.4 |
| 140° | 411.9 | 469.6 | 521.6 | 523.6 | 531.1 | 520.8 |
| 142.5° | 434.4 | 488.4 | 541.3 | 546.2 | 554.7 | 544.1 |
| 145° | 456.0 | 507.1 | 563.9 | 568.8 | 586.4 | 567.7 |
| 147.5° | 465.5 | 524.9 | 568.8 | 586.4 | 597.7 | 589.3 |
| 150° | 496.5 | 540.6 | 580.8 | 604.4 | 616.4 | 608.0 |
| 152.5° | 515.2 | 555.9 | 591.1 | 618.5 | 631.6 | 625.9 |
| 155° | 531.1 | 570.0 | 602.3 | 626.9 | 642.8 | 641.8 |
| 157.5° | 548.0 | 582.9 | 611.8 | 632.6 | 654.1 | 653.1 |
| 160° | 563.1 | 594.4 | 620.3 | 637.2 | 655.9 | 662.6 |
| 162.5° | 578.0 | 603.9 | 626.9 | 640.0 | 655.9 | 663.6 |
| 165° | 589.3 | 613.6 | 631.6 | 642.8 | 655.1 | 662.6 |
| 167.5° | 600.5 | 620.3 | 637.2 | 644.6 | 652.3 | 659.7 |
| 170° | 606.2 | 626.4 | 639.0 | 643.9 | 651.3 | 655.9 |
| 172.5° | 620.3 | 632.1 | 640.0 | 644.6 | 647.4 | 653.1 |
| 175° | 625.9 | 635.4 | 640.0 | 641.8 | 643.9 | 648.5 |
| 177.5° | 631.6 | 637.2 | 639.0 | 639.0 | 638.2 | 641.8 |
| 180° | 635.3 | 635.3 | 635.3 | 635.3 | 635.3 | 635.3 |

(END OF REPORT)